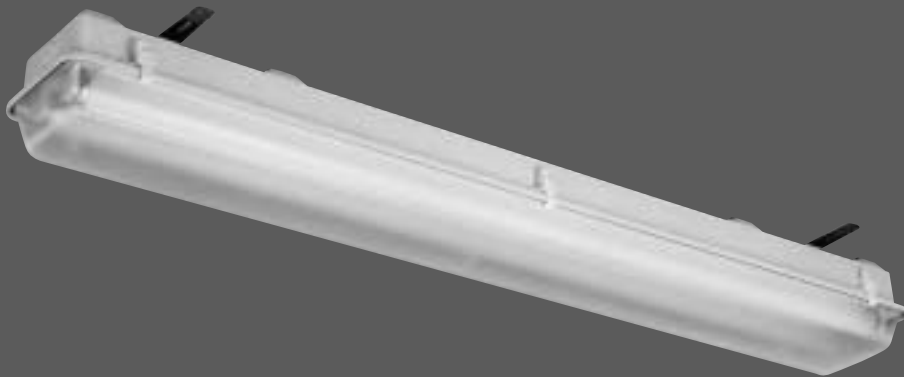


# DURACLAMP WITH OPTIONAL "VISION+" OPTICS

## Fiberglass Fluorescent Luminaire For Corrosive or Wet Locations



### FEATURES

- High lumen package
- NSF International
- Fiberglass housing
- Wet location
- "Vision+" Optics
- 2, 4 & 8 foot designs
- Optional polycarbonate lens

### BENEFITS

- Requires less fixtures
- Toolless entry
- Corrosion resistant
- Resists abuse
- 23% increase in efficiency

### APPLICATIONS

- Food processing
- Showers
- Wastewater treatment
- Kitchens
- Canopies
- Paper mills

## Specifications/Features

### GENERAL

- Composite housing wet location fluorescent.
- High quality gasket molded into housing.

### CONSTRUCTION

- One piece molded fiberglass housing; available in 2', 4', or 8'.
- Permanent white pigment molded into fiber glass.
- Conduit entries provided in both ends; 7/8" Dia.; sealed with plastic closure plug.
- Celcon plastic latches are standard. Optional with polycarbonate, stainless steel or celcon tamper resistant.
- One piece closed cell polyurethane gasket molded into edge of housing — no tape gasket to pull apart.
- Threaded stud in back of housing provided to support fixture — optional stainless steel mounting bracket available.

### LENS/OPTICS

- Acrylic, pebbled lens standard; optional pebbled DR acrylic or polycarbonate clear prismatic with smooth exterior finish available.
- Vision+ parabolic reflector provides a 40% increase in illumination directly under the fixture. Increases 0-40 degree output 18%. Choose option VPR.

### LISTINGS

- Listed, Wet Locations.
- NSF International.
- Listed in U.S.A. and Canada.



*One piece closed cell polyurethane gasket permanently molded into edge of housing.*



*Optional SS mounting bracket attaches to back of housing with integral threaded studs.*

### ELECTRICAL

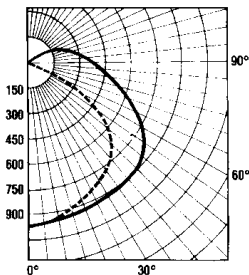
- Rapid start, high output, T-8 and compact fluorescent available.
- Energy saving ballasts standard for F40T12 lamps.
- Electronic Ballasts available.
- All fixtures carry the IBEW Union label to ensure quality.

# Photometrics

Coefficients of Utilization  
2 Lamp, 40W T12 RS, DC4-2F40/120 Shallow Lens

Ceiling Refl.	80%				50%				10%				
	70	50	30	10	50	30	10	50	30	10	50	30	10
RCR	20% Effective Floor Cavity Reflectance												
1	.66	.63	.59	.56	.56	.54	.59	.49	.48	.46			
2	.60	.54	.49	.45	.48	.45	.41	.42	.40	.37			
3	.54	.46	.41	.36	.42	.38	.34	.37	.34	.31			
4	.49	.41	.35	.30	.37	.32	.28	.32	.29	.26			
5	.45	.36	.30	.25	.33	.28	.24	.29	.25	.22			
6	.41	.32	.26	.22	.29	.24	.21	.26	.22	.19			
7	.38	.29	.23	.19	.26	.22	.18	.23	.20	.17			
8	.35	.26	.21	.17	.24	.19	.16	.21	.18	.15			
9	.33	.24	.19	.15	.22	.17	.14	.20	.16	.13			
10	.31	.22	.17	.13	.20	.16	.13	.18	.15	.12			

S/MH Ratio 1.5/1.0  
Total Lamp Lumens 6,300  
Fixture Efficiency 64.2%

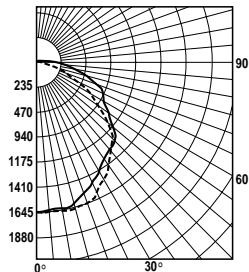


Report No. P11442  
0° -----  
90° -----

Coefficients of Utilization - "Vision+" Optics  
2 Lamp, 32W T8 DC4-2F32-VPR

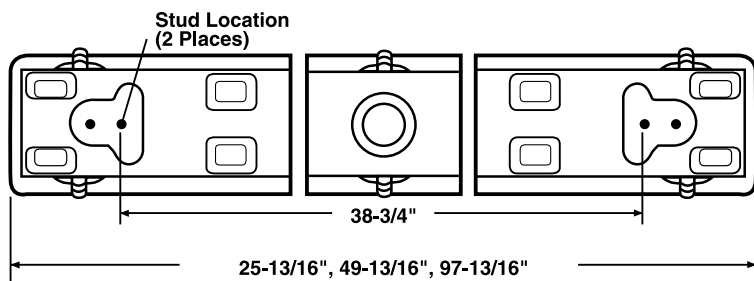
Ceiling Refl.	80%			50%			10%		
	50	30	10	50	30	10	50	30	10
RCR	20% Effective Floor Cavity Reflectance								
1	.82	.78	.75	.76	.73	.71	.69	.67	.66
2	.72	.66	.62	.67	.62	.59	.61	.58	.55
3	.63	.57	.52	.59	.54	.50	.54	.51	.48
4	.56	.49	.44	.53	.47	.43	.49	.45	.41
5	.50	.43	.38	.47	.41	.37	.43	.39	.35
6	.45	.38	.33	.42	.36	.32	.39	.34	.31
7	.40	.33	.28	.38	.32	.28	.35	.31	.27
8	.36	.29	.25	.34	.28	.24	.32	.27	.24
9	.32	.26	.21	.31	.25	.21	.29	.24	.20
10	.30	.23	.19	.28	.22	.19	.26	.21	.18

S/MH Ratio 1.2/1.1  
Total Lamp Lumens 5,800  
Fixture Efficiency 79.4%

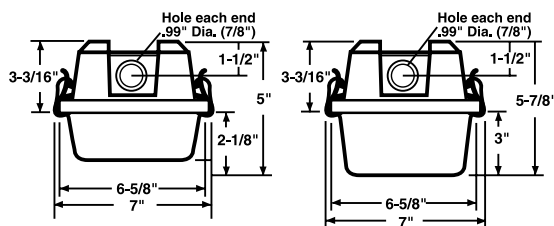


Report No. P11475-2  
0° -----  
90° -----

# Dimensions



TOP VIEW



SHALLOW

DEEP

For 4ft. H.O. and all 8 ft. units

# Duraclamp Catalog Numbers

**DC4 - 2 F32 - 1 - EB**

LENGTH  
2 - 2'  
4 - 4'  
8 - 8'

VOLTAGE  
1 - 120  
2 - 277

NUMBER OF LAMPS  
1 - 1 Lamp  
2 - 2 Lamp  
3 - 3 Lamp  
4 - 4 Lamp

LAMP TYPE  
F17 - F17 T8  
F20 - F20 T12  
F32 - F32 T8  
B40 - F140/2G11  
F40 - F40 T12  
F59 - F96 T8  
F60 - F48 T12/HO  
F75 - F96 T12  
F86 - F96 T8/HO  
F110 - F96 T12/HO

# Options

- "/FF" - Fast Acting Fixture Fuse, Buss GLR
- "/SFF" - Slow Blow (Fusetron) Fuse, Buss GMF
- "/EB" - For electronic ballast
- "/DR" - For DR Acrylic Pebbled Lens
- "/PC" - For Polycarbonate Clear Prismatic Lens
- "/TP" - For tamper resistant latches
- "/PLY LATCH" - Celcon latch standard, for polycarbonate latch
- "/MB" - For mounting bracket
- "/BEF" - For Bodine B-70 Battery Emergency System - Damp location only
- "/0" - For 0° ballast 4' and 8' Deep Channel/40W T-12 and Slimline
- "/-20" - For -20° ballast 60W only
- "/SS-LATCH" - For stainless steel latch
- "/VPR" - "Vision+" High Efficiency T8 Lamp Reflector