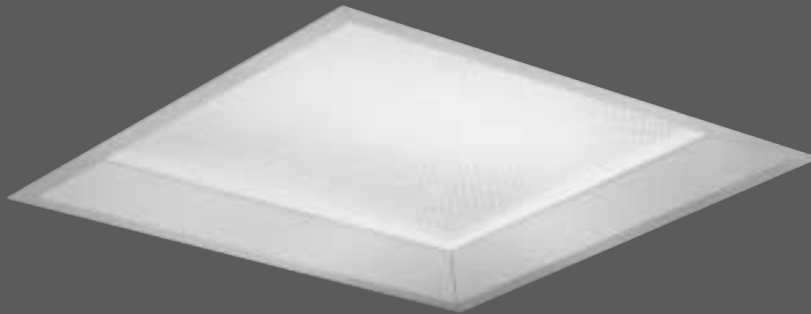


SQUARELUME™ PL

New Recessed Square For "Wet Location" Environments



FEATURES

- 1 To 3 PL lamps
- Wet location listed
- Aluminum, stainless steel or CRS door
- Vandal resistant option
- Grid or flange mounting

BENEFITS

- High lumen package
- Instant on lamps
- Resists abuse
- Indoor & outdoor use
- Non-yellowing optics

APPLICATIONS

- Clean, corrosive and dirty environments
- Canopies
- Corridors
- Commercial
- Schools
- Hospitals

Specifications/Features

GENERAL

- Recessed 12" square, sealed and gasketed, compact fluorescent.
- Utilizes Twin Tube, Quad Tube, Double D, and Linear Quad Lamps.

CONSTRUCTION

- 22 ga. CRS housing finished in baked white epoxy/polyester powder coat.
- 20 ga. Galvanized mounting frame for grid, drywall and plaster ceilings.
- Hem on bottom of mounting frame eliminates sharp edge for safety in installation and maintenance.
- Sliding bar hangers available for tee bar or wood joists. Swing mounting brackets provided with flange mounts.
- Side 1/2" conduit knockouts for easy thru wiring.
- Reflector/lamp socket assembly removable without tools for easy access to ballast and wiring compartment.
- Reflector safety chained to housing.

DOOR FRAME/LENS

- Extruded aluminum regressed door frame finished in baked white epoxy/polyester powder coat for corrosion resistance.
- Optional flat Stainless Steel or CRS door frame.
- Door frame secured to housing by twin torsion springs for quick lamp access.
- Optional tamper resistant screws.
- Door frame gasketed at ceiling interface with closed cell polyethylene gasket to preclude water and minimize insect intrusion.



Wiring is fast through top side removable access plate.



1,2,3 lamp reflector provides 95% reflectance factor and angular shape for wide distribution.



After mounting frame is installed, entire unit can be wired and lamped, then lifted into plenum.

- Lens is .125" thick Acrylic Prismatic, gasketed to door frame with closed cell polyethylene gasket.
- Optional drop opal glass lens available.

LISTINGS

- Listed for Wet Locations — Covered Ceilings Only.
- Listed for Through Wiring — 4 #12 AWG.
- Listed for use in U.S. and Canada.

ELECTRICAL

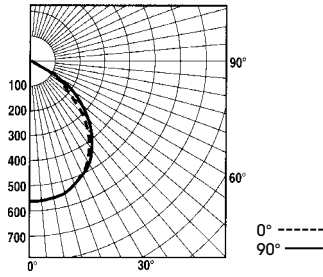
- Electronic ballasts standard.
- Ballasts mounted to housing with stake-in screws.
- Removable wiring access plate with 2-1/2" conduit K.O.'s.
- All fixtures carry the IBEW Union label to ensure quality.

Photometrics

Coefficients of Utilization
2 Lamp, 18W Quad, F6G-12218T1AC1

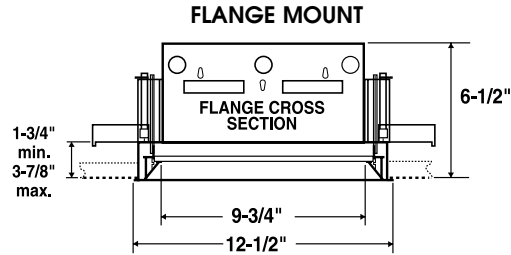
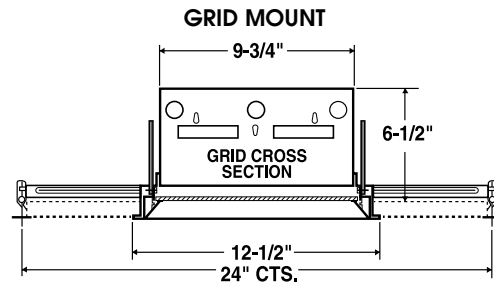
Ceiling Refl.	80%				50%				10%					
Wall Refl.	70	50	30	10	50	30	10	50	30	10	70	50	30	10
RCR	20% Effective Floor Cavity Reflectance													
1	.53	.51	.50	.48	.48	.47	.46	.45	.44	.43	.43	.41	.39	.38
2	.49	.46	.43	.41	.43	.41	.39	.40	.39	.38	.38	.36	.34	.33
3	.45	.41	.37	.35	.39	.36	.34	.36	.34	.33	.33	.31	.29	.28
4	.42	.37	.33	.30	.35	.32	.30	.33	.31	.29	.29	.27	.26	.25
5	.39	.33	.29	.26	.32	.28	.26	.30	.27	.26	.26	.24	.23	.22
6	.36	.30	.26	.23	.29	.26	.23	.27	.25	.23	.23	.21	.20	.19
7	.33	.27	.24	.21	.26	.23	.21	.25	.22	.20	.20	.18	.17	.16
8	.31	.25	.21	.19	.24	.21	.19	.23	.20	.18	.18	.16	.15	.14
9	.29	.23	.19	.17	.22	.19	.17	.21	.19	.17	.17	.15	.14	.13
10	.27	.21	.18	.15	.21	.18	.15	.20	.17	.15	.15	.13	.12	.11

S/MH Ratio 40°-1.36
Total Lamp Lumens 1,250 per lamp
Multiplier: 1.152 1-Lamp/.888 3-Lamp



Report No.
P11446B

Dimensions



SquareLume PL Catalog Numbers

F6 G - 12 - 1 - 13 - T - 1 - AP3 - 1

MOUNTING
F - Flange
G - Grid
J - Wood Joist

SIZE
12" Square

NUMBER OF LAMPS
1 - 1 Lamp
2 - 2 Lamp
3 - 3 Lamp

Wattage	Type	#Available per Fixture	Lamp Base
13	Twin Tube	1, 2, 3	GX23
16	Quad	1, 2, 3	GX32d-1
18	Biax	1, 2, 3	2G11
18	Quad	1, 2, 3	G24d-2
26	Quad	1, 2	G24d-3
28	Linear Quad	1, 2	2G11
38	Double D	1	GR10G

VOLTAGE
1 - 120V
2 - 277V (16w Quad and 28w Linear Quad, 120V only)

LENS
AP3 - .125 Acrylic prismatic P-12 Pattern
C73 - .156 Prismatic Tempered Glass
PC1 - .125 Polycarbonate Clear
OPL - Opal Drop Lens
PP1 - .125 Polycarbonate Prismatic P-12 Pattern
TX - Tufflex Glass

FRAME
1 - White Regress
2 - Black Regress
3 - White Overlap
4 - Black overlap
5 - Stainless Overlap

LAMP TYPE
T - Twin Tube
Q - Quad
B - Biax
L - Linear Quad
D - Double D

Options

- "/0 Deg." - 0 Degree, 18W Quad G24q-2 Base and 26W Quad G24g-3 ONLY
- "/Dim" - Dimming Ballast, 18W Quad G24q-2 Base and 26W Quad G24g-3 ONLY
- "/FF" - Fixture Fuse
- "/TP" - Tamper Proof
- "/RIF" - Radio Interference Filters
- "/L" - Lamp included
- "/BEF" - Emergency Battery available for 1 or 2 lamp; 13W, 16W, 18W, 26W

Consult factory for other configurations.

Project Name:

Type	Catalogue Number	Lamp	Comments

Guth utilized the services of U.L. and ETL for listing products. Specifications and data are subject to change without notice.